

TECHNICAL BULLETIN

TILING INSTALLATION ON UNIVERSAL SHOWER BASE TRAYS

INTRODUCTION & SCOPE

This Technical Bulletin has been prepared to provide guidelines for the installation of tiles to pre-fabricated UNIVERSAL shower trays marketed and distributed by Universal Shower Base Pty Ltd.

CONDITIONS

The installation must conform to the requirements of AS 3958:2007

The installation must be carried out by qualified tradespersons.

All products recommended in the system shall be used in strict accordance with the manufacturers' instructions and are within the shelf life outlined on the packaging.

All products recommended in the system to be used must be supplied to the site in unopened sealed containers and shall be stored in accordance with manufacturer's instructions.

Testing was carried out on the basis that the deflection of the Universal shower base when installed does not exceed recommended 1/360 of span.

DUNLOP warrants satisfactory adhesion of the tiles to the Universal shower base installed strictly as per guidelines provided in this document.

The Universal shower base shall be located and installed strictly as per manufacturer's instructions.

TYPES OF BASE

DUNLOP examined two configurations of Universal Shower Base in 2013 and this bulletin covers the following two types shown at right.

SURFACE PREPARATION

The Universal shower base surface must be clean and free from all dirt, grease, oil and other surface contaminants.

The Universal shower base must be located and securely fixed to substrate in accordance with the recommended instructions provided by the manufacturer and free from excessive deflection (i.e. greater than 1/360th of the span in any direction).

Sanding is not strictly required for fresh and clean surfaces of the base, however where there is contamination then all surfaces of the base to be tiled, can be sanded using 40 grit sand paper to roughen the surface and thoroughly cleaned free from dust using a damp sponge.

TILE APPLICATION

Prime the surfaces with one coat of the following;

DUNLOP DAMP-PROOF

using a brush or a roller to get a full coverage.

Fix tiles to Universal™ shower base using:

DUNLOP TILE ALL

DUNLOP WALL & FLOOR FLEXIBLE

DUNLOP TRADE RESAFLEX

tile adhesive using a 10x10x10mm notch trowel.

Check for 100% adhesive coverage on the back of the tile.

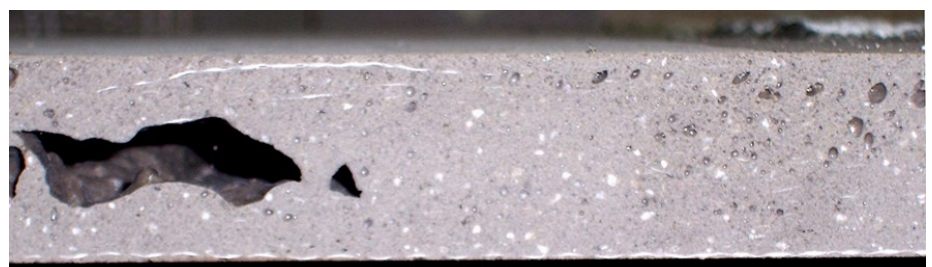
MEMBRANE APPLICATION

Where a waterproof membrane is required, DUNLOP UNDERTILE WATERPROOFER or DUNLOP WATERPROOFER RAPID are suitable for use

Polymer-cement-fibreglass reinforced faces with a foamed urethane foam core



Polymer – cement combination with fibre-glass mesh reinforcement



TECHNICAL BULLETIN

with these shower bases. Priming shall be done the primer listed above.

GROUT APPLICATION

Suitable cement based grouts would be DUNLOP COLOURED GROUT mixed with the flexible additive DUNLOP PRIMER AND ADDITIVE diluted in accordance with the datasheet to a 1:1 ratio with water.

Suitable sealants depending on the tile type would be DUNLOP Coloured Silicone (except for acid sensitive tiles), DUNLOP TILE ALL PLUS urethane-silane (white) or DUNLOP ROOF, GUTTER & POND urethane-silane (grey).

Notes

Always refer to the product data sheets for specific usage details.

The information contained herein is to the best of our knowledge true and accurate.

No warranty is implied or given as to its completeness or accuracy in describing the performance or suitability of the product application.

Users are asked to check that the literature in their possession is the latest issue.

It is the responsibility of the users to confirm that all products are suitable for the application and system, and are compatible with products in the application.

More detailed technical advice can be obtained by ringing DUNLOP on free call using the numbers shown below or via email from the contact us page at the DUNLOP DIY website.

ARDEX AUSTRALIA PTY LTD,
ABN 82 000 550 005
7/20 Powers Road, Seven Hills, NSW.
2147.